

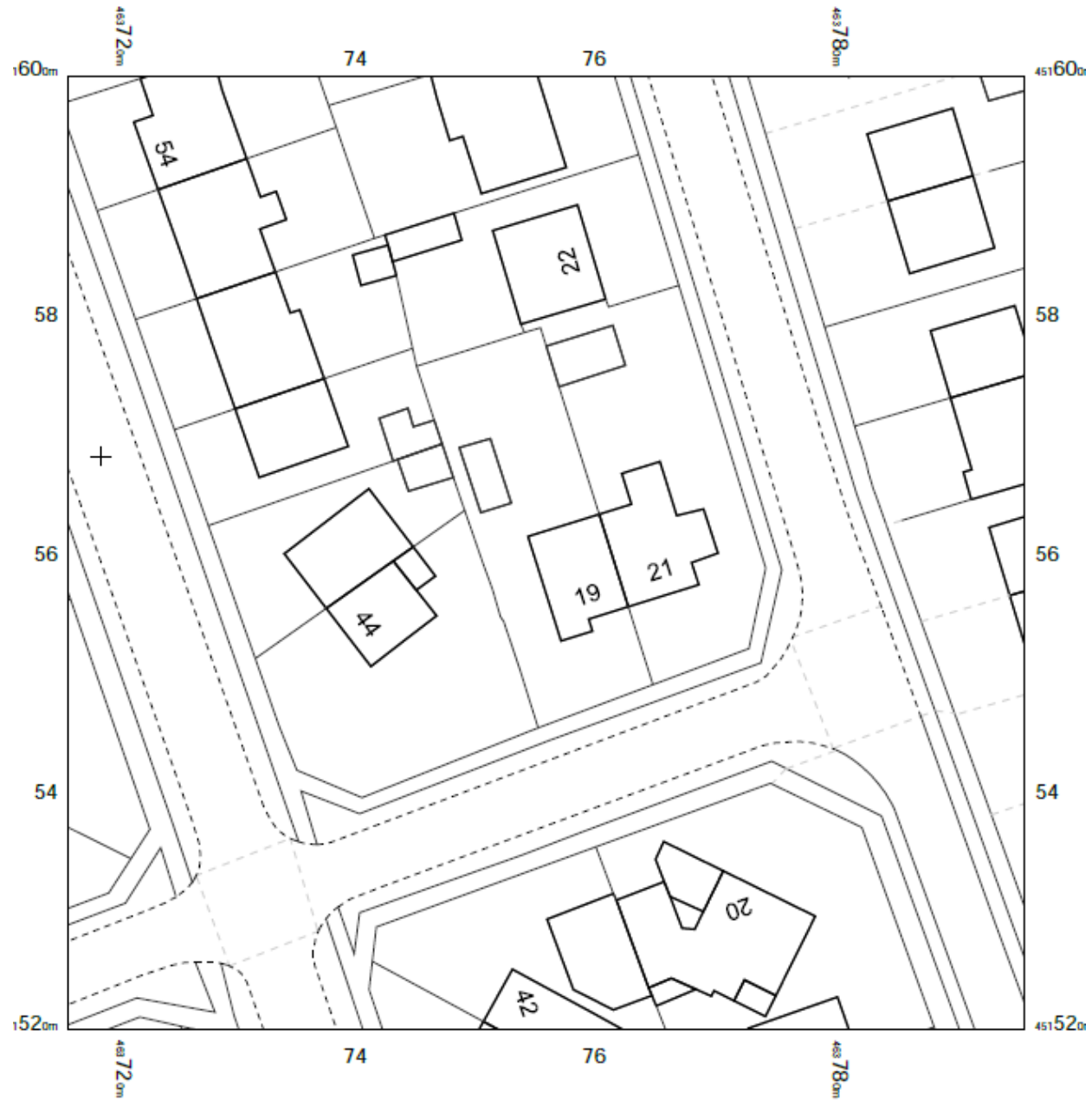


Planning Committee B

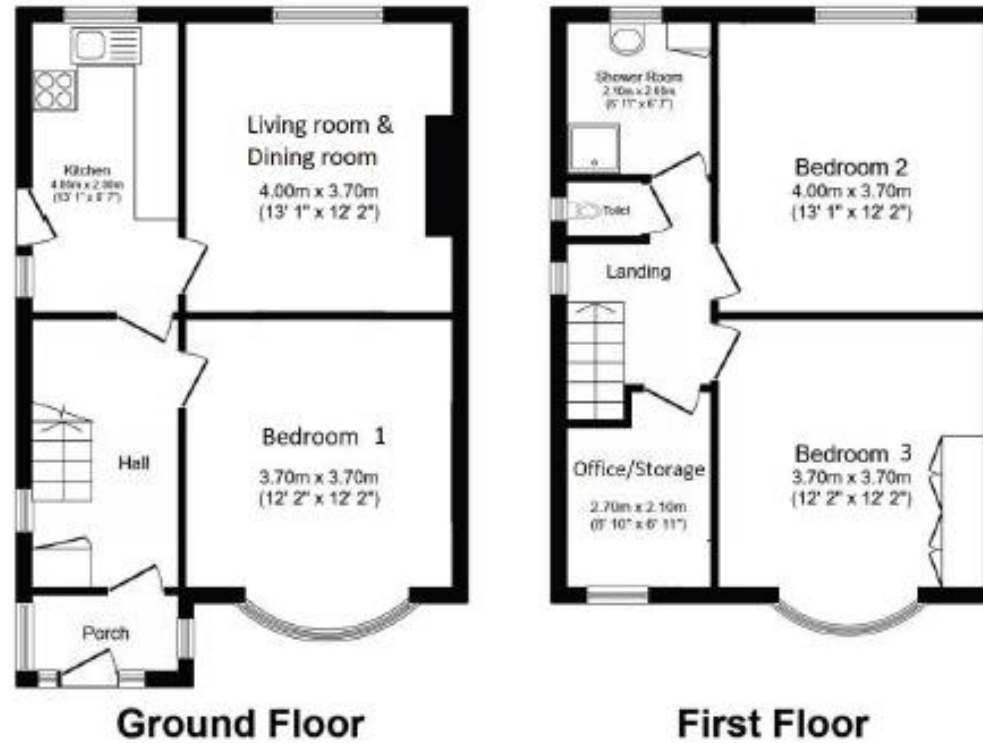
24/00175/FUL

19 Baysdale Avenue Osbaldwick

Site Plans



Proposed Floor Plans



Total floor area 94.6 sq.m. (1,018 sq.ft.) approx

This floor plan is for illustrative purposes only. It is not drawn to scale. Any measurements, floor areas (including any total floor area), openings and orientation are approximate. No details are guaranteed, they cannot be relied upon for any purpose and they do not form part of any agreement. No liability is taken for any error, omission or misstatement. A party must rely upon its own inspection(s). Plan produced for Reed Rains. Powered by www.localagent.com